



## AUTODWG DWGSEE/PRO USER GUIDE

### CONTENT

WELCOME TO DWGSEE	- 1 -
1 STARTING DWGSEE	- 2 -
2 ABOUT THE DWGSEE USER INTERFACE	- 2 -
3 BROWSING	- 2 -
4 VIEWING	- 4 -
5 PRINTING	- 7 -
6 REDLINE AND MARKUP	- 9 -
7 MEASUREMENTS AND SCALE	- 11 -
8 COMPARE BETWEEN DIFFERENT DRAWING VERSIONS	- 13 -
9 COPY AND PASTE	- 13 -
YOUR AGREEMENT TO THIS LICENSE	- 14 -

## Welcome to DWGSee

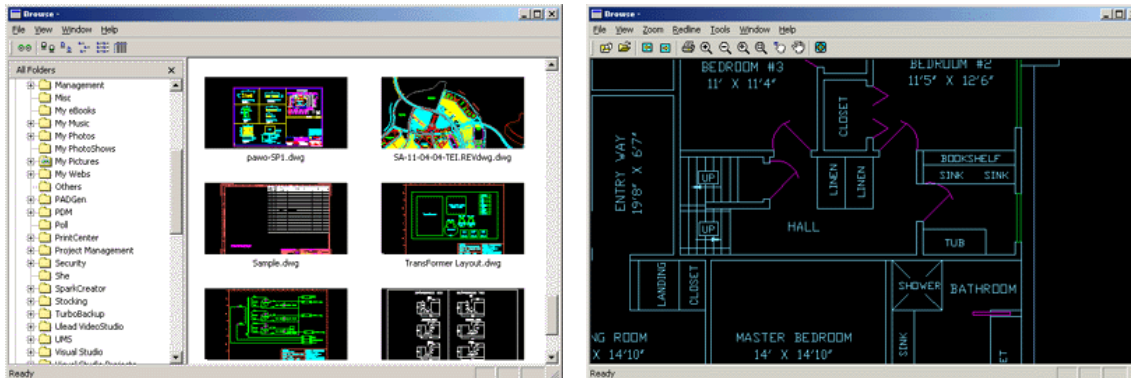
Thanks for choosing DWGSee - View DWG file without requiring the native AutoCAD application.

DWGSee is a comprehensive application ideal for viewing, printing, marking and sharing your DWG files. With the DWG browser, you can browse and preview DWG and DXF files on your computer.

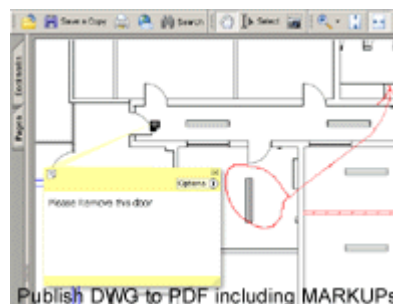
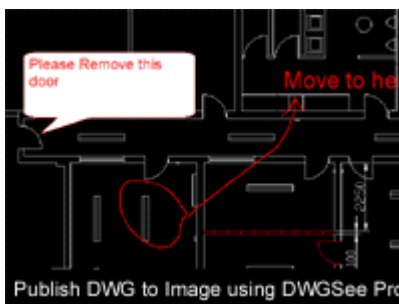
DWGSee is a fast, powerful and easy-to-use DWG management system that everyone from beginners to professionals can use and enjoy.

### DWGSee features

- Support AutoCAD DWG format from R2.5 to the latest version 2009
- Support DWG, DXF and DWF version of AutoCAD
- Preview folders and archive contents by displaying thumbnails of the DWG's on list icons
- Support View Mode and Browse Mode



- Fast DWG view, with mouse zoom, pan
- Support markup, redline



- Markup (rectangle, ellipse, cloud markup)
- Measure length and area with smart snap
- Print DWG/DXF/DWF
- Batch plot DWG/DXF/DWF **HOT**
- DWG revisions comparison **NEW**
- DWG to JPG, DWG to TIFF, DWG to BMP, DWG to GIF Conversion (Pro version only)
- DWG to PDF Conversion (Pro version only)
- Publishing markup in PDF or image format (Pro version only)
- Copy/paste the entire or the whole drawing into MS office as vector image (Pro version only) **NEW**

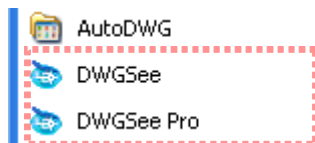
## 1 Starting DWGSee

After you install DWGSee on your computer, an application icon is placed on the desktop and in the Start menu.

Double-click the DWGSee icon on the desktop:



Click Windows Start | All Programs | AutoDWG DWGSee:



## 2 About the DWGSee user interface

The DWGSee user interface is designed to provide easy access to tools and features.

### 1) Browse Mode

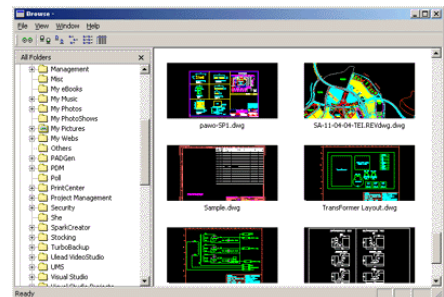
The DWGSee is made up of two panes:

**Folders Pane** -- This pane displays the directory structure of your computer. You can browse through the folders and view their DWG contents in the File List pane.

**File List Pane** -- This pane displays the contents of the currently selected folder.

You can open and close Folders pane, move them to different areas on your screen, and dock them on.

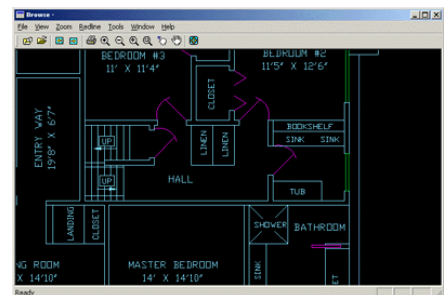
The Browser toolbar is located at the top of the Browser, under the menu bar.



### 2) Viewer

The DWGSee Viewer display DWGs in full resolution one at a time.

The View toolbars is located at the top of the Viewer, under the menu bar.





## 3 Browsing

With the DWGSee Browser you can browse, sort, and view your DWG, DXF and DWF files.

### 1) Using the Folders pane

The Folders pane displays a directory tree of all the folders on your computer, similar to Windows Explorer. You can select one folder in the Folders pane to display their contents in the File List pane.


- **Open a DWG or DXF file to view**
  - Click File | Open in menu OR
  - Click Open DWG file button  in toolbar OR
  - Shortcut "Ctrl + O"
- **Open or close the Folders pane**
  - Click View | Folders in menu OR
  - Click Folders bar button  in toolbar

## 2) Using the Files pane


You can select different view modes to display your files in the File List pane, including thumbnail previews and file details.

- **View files with thumbnails**


Display thumbnail previews of all DWG and DXF files in the File List pane.

    - Click View | Thumbnails in menu OR
    - Click View thumbnail button  in toolbar
  - **View Files with details**



Displays files in a list, represented by large default system icons for each file type.

    - Click View | Details in menu OR
    - Click View details button  in toolbar
  - **View Files with list**

Display a list of file names and extensions.

    - Click View | List in menu OR
    - Click View list button  in toolbar
  - **View Files with icons**

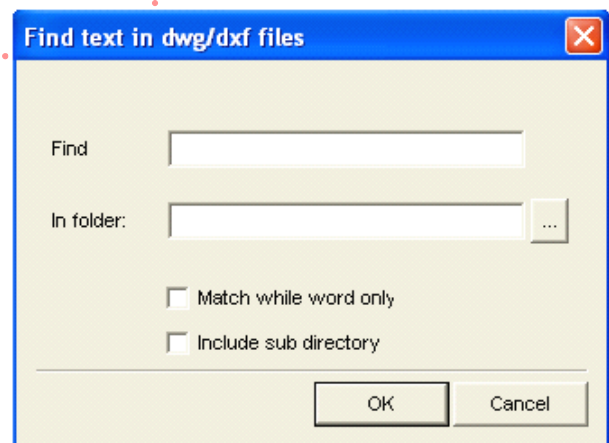
Display a list of file names and details about each file, such as size, and creation date.

    - Click View | Icons OR
    - Click View icons button  in toolbar
- 3) **Search text in drawings**
- Click Options | Find text in files OR
  - Click Search button  in toolbar OR

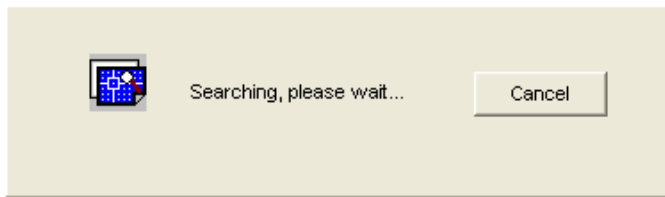
Right click | Search text in drawings

- **Search options:**

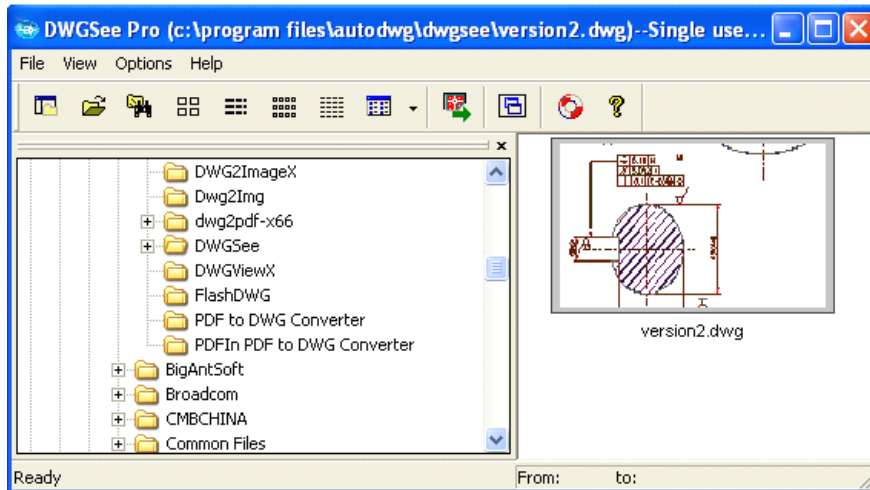
Enter the text which you want to find and choose the folder to search:



Click OK and wait for the search result:




For example, search '01/04/09' in 'C:\AutoDWG\DWGSee', after finish searching, the results will be listed in the main pane of DWGSee.



#### 4) Back to view mode

Click File | View Mode

OR

Click back to view mode button  in toolbar

## 4 Viewing

### 1) The Viewer window contains three main areas:

- **Viewer toolbar:**

Located at the top of the Viewer and below the menu bar. Provides shortcut buttons to commonly used tools and commands, such as the zoom and markup tools.

- **View area:**

This is the main Viewer area, where the current DWG or DXF file is displayed.

- **Status bar:**

Located at the bottom of the View area, list all layout of the current DWG or DXF file. You can select which layout of the drawing to be showed.

### 2) Opening files in the Viewer

In the file list pane, double-click a file

OR








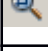
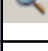





In the menu file | open (Ctrl+O), select a file to view


OR


Drag a DWG (DXF/DWF) file to DWGSee main window

### 3) Menus and hotkey List

Hotkey list and features explanations:

	File   Open	Ctrl + O	Open the Open file dialog box, in which you can select one DWG or DXF file to open in the Viewer.
	File   DWG Compare		DWG revisions comparison
	File   Open Markup		Load Markup (*.mrk) on drawing
	File   Save Markup		Save the currently markups to *.mrk
	File   Close Markup		Close the currently Markup
	File   Back to Browser	Ctrl + B	Closes the Viewer and returns you to the Browser window.
	File   DWG Converters		Convert to PDF or BMP, JPG, TIFF, PNF image files (Pro version only)
	File   Print	Ctrl + P	Print file and choose to print current, extends or window
	File   Print Preview		Print preview
	File   Print Setup		Set configurations to print
	File   Batch Print		Batch plot several drawings
	File   Mail To		Mail via Outlook as attachment
	View   Pan	P or R	Moves drawing that are larger than the display area so that you can see hidden areas.
	View   Zoom Window	W	Selects a rectangular area of drawing
	View   Zoom In	_	Increases the magnification of the current drawing
	View   Zoom out	+	Reduces the magnification of the current drawing
	View   Zoom All	A	Show the drawing fit to viewer's area
	View   Rotate		Rotate the drawing with specific degree
	View   Previous DWG	Pg Up	Displays the previous DWG file
	View   Next DWG	Pg Dn	Displays the next DWG file
	View   Full Screen	F	Press F to enter and exit full screen of the drawing
	View   Tool Bar		Show/hide tool bar
	View   Status Bar		Show/hide status bar

	View   Copy	Ctrl + C	Copy the currently window and paste into MS Office as vector image (WMF, EMF)
	View   Copy by Window	Ctrl + R	Copy by window and paste into MS Office as vector image (WMF, EMF)
	View   Option		Set the copy drawing option
	Markup   Measure		Measure distance
	Markup   Calculate Area		Calculate area of rectangles, circles, etc
	Markup   Red Line		Add redline markup
	Markup   Polyline		Add polyline markup
	Markup   Rectangles		Add rectangles markup
	Markup   Text Box		Add text box markup
	Markup   Text Rectangle		Add text rectangle markup
	Markup   Text Round Rectangle		Add text round rectangle markup
	Markup   Text Ellipse		Add text ellipse markup
	Markup   Text Cloud		Add text cloud markup
	Markup   Show markup		Show/hide markup details
	Markup   Markup Manager		Edit/modify markup
	Markup   Liner		Add liner measurement markup
	Markup   Aligned		Add aligned measurement markup
	Markup   Angular		Add angular measurement markup
	Markup   Radius		Add radius measurement markup
	Options   XREF Manager		Add or move XREF path of drawings
	Options   Font/XREF Path	Ctrl + F	Select SHX/ XREF font path

	Options   Layers	Ctrl + L	Setting layers show state of current drawing
	Options   Black and White		View drawings in monocolour, assign by restart DSee
	Options   White background		Setting viewer background, assign by restart DSee
	Options   Start with Browser		Start in Browser Mode, assign by restart DSee
	Options   Open file with zoom extends		Open in zoom extends or open in last saved view, assign by restart DSee
	Options   Show hyperlink		Show/hide hyperlink
	Options   Dimension Setting		Set dimension configurations

#### 4) Some command can be active by right click menu

At the bottom of the View area you can select a layout of the drawing to be viewed.

Pan	P or R
Zoom Window	W
Zoom In	+
Zoom Out	-
Zoom All	A
Previous DWG	Page Up
Next DWG	Page Down
Full Screen	F
Copy	Ctrl+C
Copy by window	Ctrl+R

## 5 Printing

You can print current drawing's layout using the DWGSee print utility.

- **Modified Print Property**

File | Print Options

- **Line Width**

Line width option allow you to set the line weights for printed out according to AutoCAD line weights, or user assigned by drawing color.

- **Print to Scale**

If Scale to file is not checked, prints the drawing to the scale as specified in the scale options.

Otherwise, the drawing is printed to fit print area.

- **Print Preview**

Preview the printed output before printing.

File | Print Preview

- **Print**

Print the view in the current viewport.

File | Print

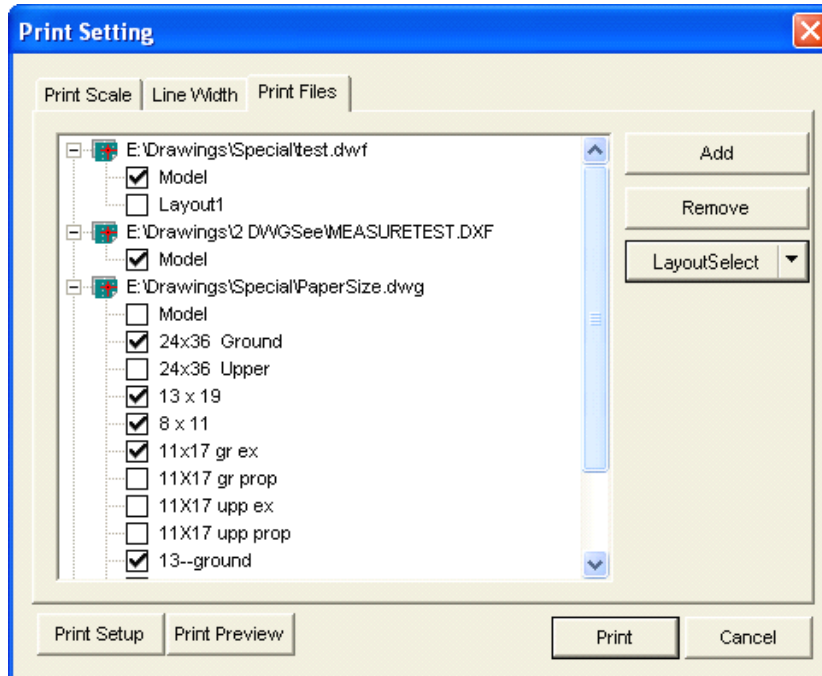


## ▪ Batch Plot

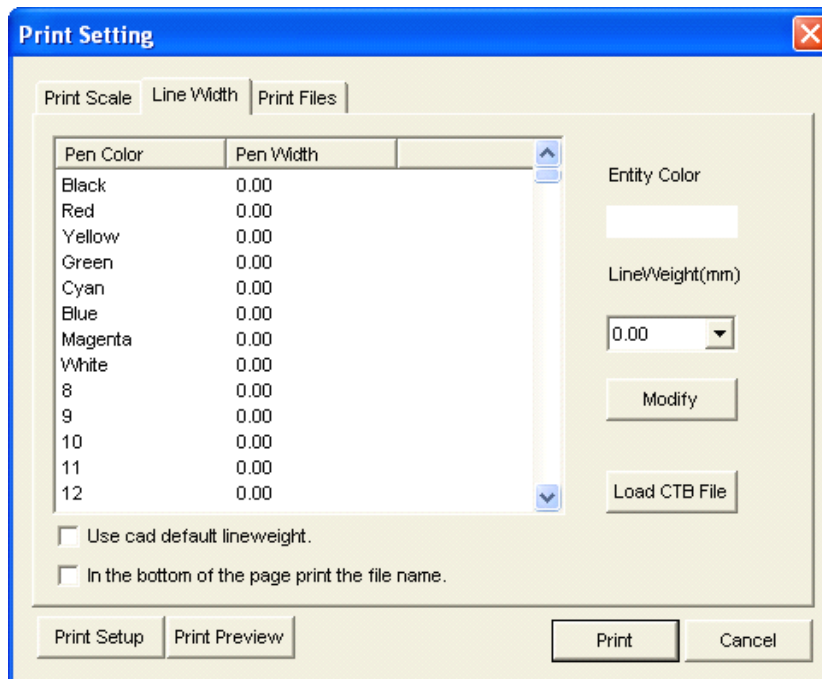
Batch print selected drawings, including DWG, DXF and DWF files.

File | Batch Print

Step 1: Click Add button and choose CAD drawings from file selection dialog box:



Step 2: Change line width from the left line width column, use cad default lineweight or change line weight by clicking the “load CTB file”:



Step 3: You can choose to print preview or click on “Print” directly.

## 6 Redline and Markup

### 1) RedLine

Markup types include RedLin, Polyline and Rectangle. Illustrate:



RedLine

Polyline

Rectangle

#### ▪ Draw Redline

**Step 1:** Active redline command

Click Markup | Redline in menu

OR

Click redline button  in Markup toolbar

The cursor icon changes to a pen.

**Step 2:** Draw redline

Hold down the left mouse button and move the cursor to the left, right, up or down...

And release the mouse button.

**Step 3:** End draw redline

Click the right mouse button, and select "End Redline" menu in right menu.

#### ▪ Delete RedLine

**Step 1:** Select redline:

Click the redline, if the redline is selected, it shows high light.

**Step 2:** Delete current redline:

Click the right mouse button, and select "Delete" menu in right menu, or click "del" key in keyboard.

### 2) Markup

#### ▪ Markup type

Markup types include Text Box markup, Rect markup, Round Rect markup, Ellipse markup and Cloud markup.

Illustrate:



#### ▪ New markup

Step 1: Active markup command

2: Click in drawing to define one corner of the markup

3: Hold down the left mouse button and move the cursor to another corner.

4: Release the mouse button.

## ▪ Edit markup

### i. Markup's property modify

Double click markup area and active edit box, in the edit box you can modify markup's content.

Click out of area to end edit box.

In markup area click right mouse button and select "Property" menu.

At the property dialog you can modify markup's content and other markup's property such as:

text's color, line's color, font...

### ii. Markup's Graphics Modified

Step1: Click markup to active markup, and show the markup stretch-point. Illustrate:



Step2: Move mouse to stretch-point. The cursor icon changes to a drag type.

Hold down the left mouse button and move the cursor to another position.

### iii. Modify markup show-mode

This command changes markup show-mode: graphic-mode to icon-mode and icon-mode to graphic-mode.

If the markup is icon-mode is active, the markup can not be modified, created or deleted.

#### ▪ Delete markup entity

Step 1: Select markup entity:

Click the markup entity, if the entity is selected that show stretch-point.

Step 2: Delete current markup entity:

Click the right mouse button, and select "Delete" menu in right menu, or click "del" key in keyboard.

## 3) Save and open markup file

### ▪ Save markup

Active command at menu:

File | Save markup

In save markup file dialog enter a file name and type.

### ▪ Open markup

Active command at menu:

File | Open markup

In open markup file dialog enter a file name and type.

### ▪ Close markup

File | Close markup

## 4) Dimension Settings

Options | Dimension settings

The default scale of the drawing is 1:1, please be aware the drawing has different scales and drawing units settings, this scale information could be found from the title block of the drawing, please set up the

drawing unit to true length scales accordingly, the DWGSee application is unable to pick up this scale information automatically.

For the "Drawing Unit" field of the Dimension properties, the units settings here is for the display of the numbers, does not calculate and change the values, since the software is unable to know the true length of the measurement. In short, the software "knows" the measurement in Drawing Unit only, and if you enter the scale of "Drawing unit" to "True Length", as well as the true "Drawing Unit", then the software is able to show up the measurement with correct true length number with true unit.

The value enter for the scale change should be: dimension marked divided by the measured drawing unit  
For example, this drawing converted with default setting, scale 1, the created length measured as 371.000, however the actual value marked as 27.74, then the value to enter to the converter scale value should be  $27.74/371.000=0.074771$

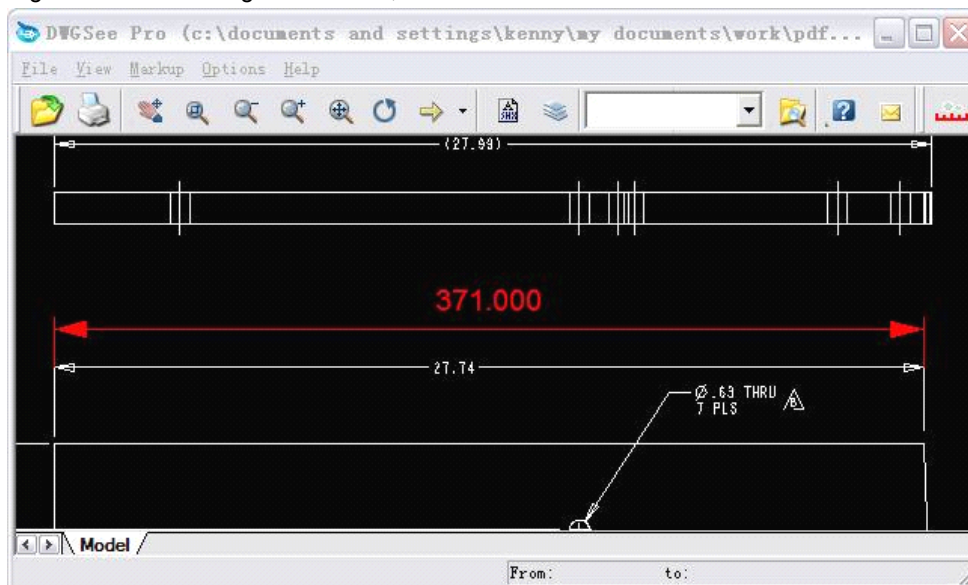
## 7 Measurements and Scale

You can specify the dimension scale in your drawing. Please set up the drawing unit to true length scales accordingly, the DWGSee application is unable to pick up this scale information automatically.

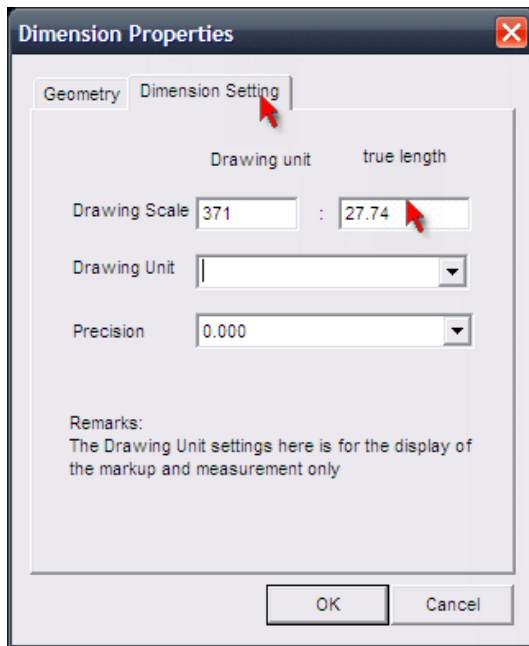
Please follow the steps below to set the dimension:

- 1) Please open up the drawing with DWGSee, check out one of the entities with dimension details, and measure the length of this entity.

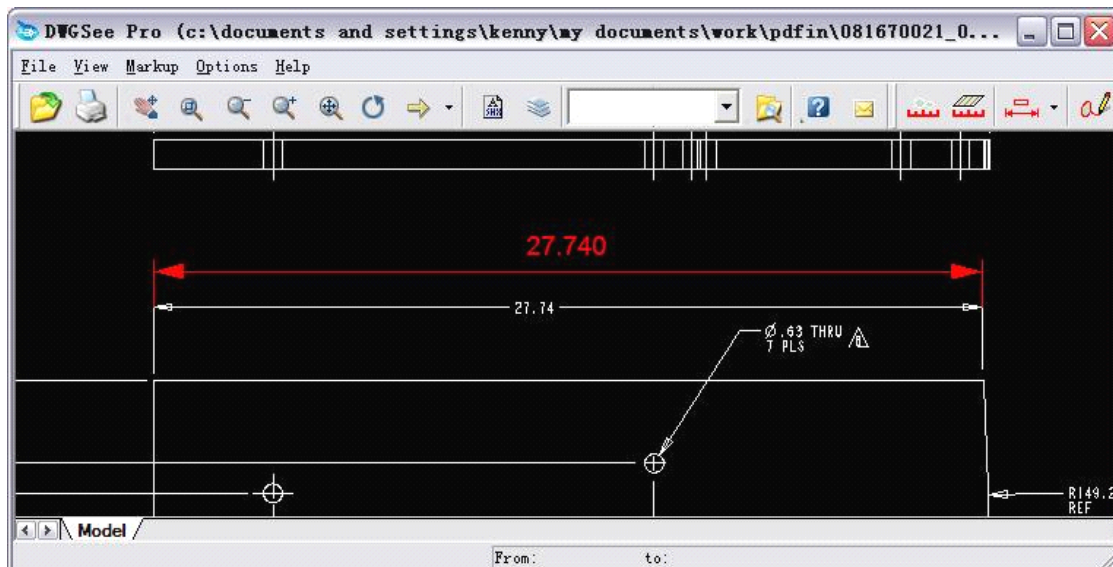
E.g. the measured length is 371.000, however the actual value is marked as 27.74.



- 2) From the menu bar, click "Options" -> "Dimension Setting", go to tab "Dimension setting".  
E.g. please enter the measured value (371.000) in "Drawing unit", and the actual length (27.74) in "true length".



- 3) Apply and close the setting window, please measure the drawing again, and the scale will be the true scale now. Then the measurement will be corrected, see screenshot below:



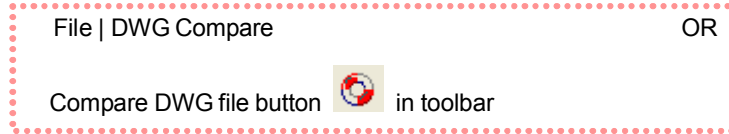
For the "Drawing Unit" field of the Dimension properties, the units settings here is for the display of the numbers, do not calculate and change the values.

In short, the software "knows" the measurement in Drawing Unit only, and if you enter the scale of "Drawing unit" to "True Length", as well as the true "Drawing Unit", then the software is able to show up the measurement with correct true length number with true unit.

## 8 Compare between different drawing versions

Compare differences between 2 drawings which are in different versions

### 1) Compare



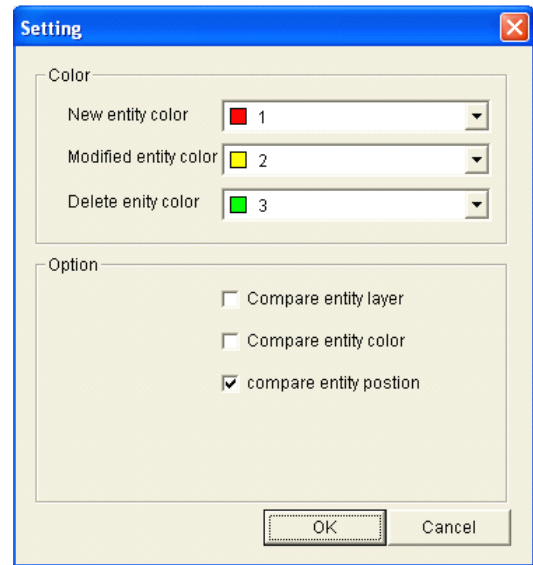
### 2) Add drawings to compare

The DWGSee Viewer highlights differences in striking colors.

### 3) Settings

Click Setting on the compare dialog box and modify the settings:

- **Color: different color will stand for different entities**
- **Option:**
  1. Compare entity layer
  2. Compare entity color
  3. Compare entity position (default: checked)



### 4) Operations

- **Global operations:**

Click  on tool bar to pan or zoom drawings synchronously.

- **Single page operation:**

Right click on the single drawing and choose to view details or pan.

## 9 Copy and Paste

Copy entities and paste them in MS Office. The copied image is vector image, typically you can save it in Photoshop and edit it.

### 1) Copy Current View



### 2) Copy by Window/Range

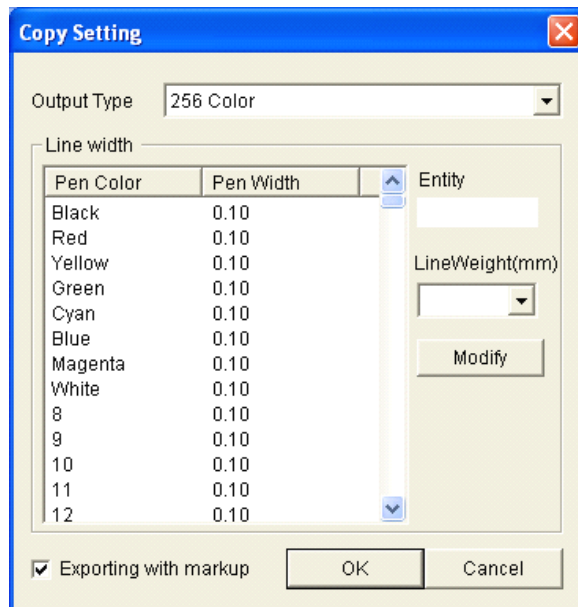


### 3) Copy Option



Set options:

- Three output types to set: 256 color, 256 gray and black/white.
- 256 output line width to set, please click MODIFY to apply the output line weight. Please note, if the copied window's extent is small, the output line weight will show thick. Please set the line weight proper and typically copy/paste the drawing entities into MS office or Photoshop to edit the vector image.
- Exporting with markup.



## Your Agreement to this License

You should carefully read the following terms and conditions before using, installing, copying, distributing, or transmitting this software. By using, installing, copying, distributing, or transmitting DWGSee, you agree to all of the terms of this agreement ("License").

Please read the license terms below. If you do not agree to all of the terms of this License, then do not use, install, copy, distribute, or transmit DWGSee.

### 1) DWGSee Evaluation License

This is not free software. Subject to the terms below, you are hereby licensed by AutoDWG to use one copy of DWGSee, on one computer or workstation, for evaluation purposes without charge for a period of 21 days. If you use this software after the 21-day evaluation period, a license fee is required.

Subject to all of the terms of this License, you may, without making any payment to AutoDWG:

- Give exact copies of this evaluation version of DWGSee personally to anyone
- Distribute exact copies of this evaluation version of DWGSee, if done exclusively through electronic channels
- Make as many exact copies of this evaluation version of DWGSee as you wish, for purposes of distribution as described in (a) and (b) above



## 2) DWGSee Standard License

Each Licensed Copy of DWGSee may either be used by a single person who uses the software personally on one or more computers, or installed on a single workstation used nonsimultaneously by multiple people, but not both. This is not a concurrent use license.

Each Licensed Copy may be accessed through a network, provided that you have purchased rights to use a Licensed Copy for each workstation that will access DWGSee through the network. For instance, if 10 different Workstations will access DWGSee on the network; you must purchase 10 per user licenses.

And we also offer per concurrent user license, the concurrent license number has to be equal or greater than the server number.

The minimum unit for concurrent license is 3 and for per user license is 5.

Inquiry please contact our sales [info@autodwg.com](mailto:info@autodwg.com).